

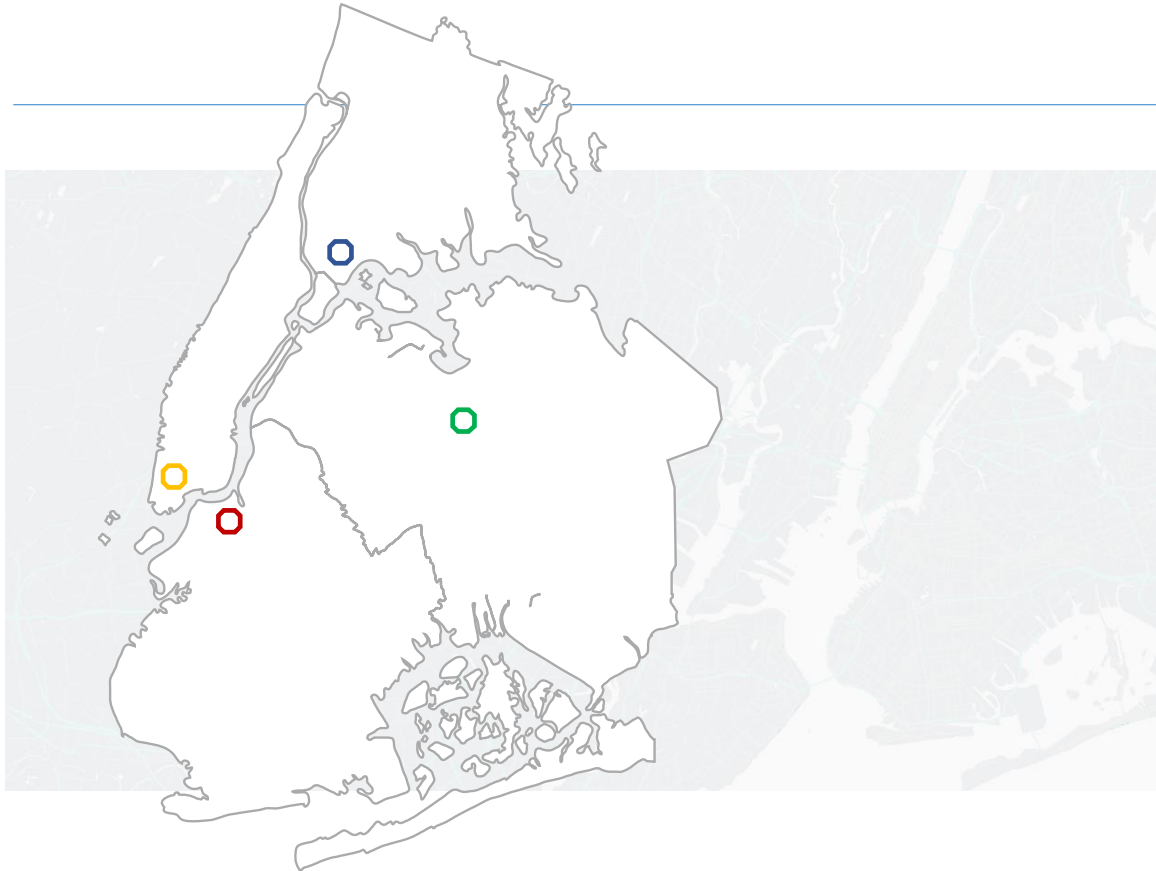
# BOROUGH-BASED JAIL PROGRAM INDUSTRY DAY

November 13, 2019

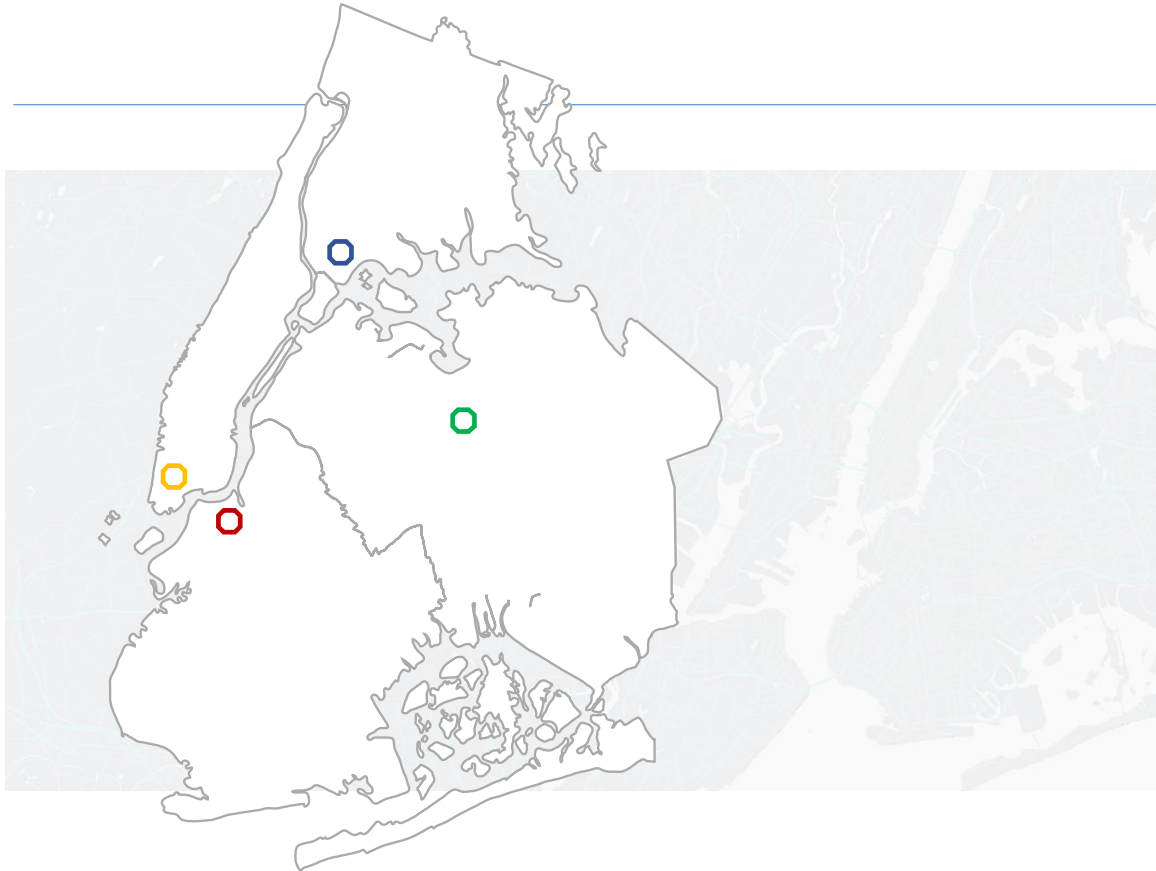
9 a.m. to 11 a.m.

Department of Design and  
Construction

Atrium

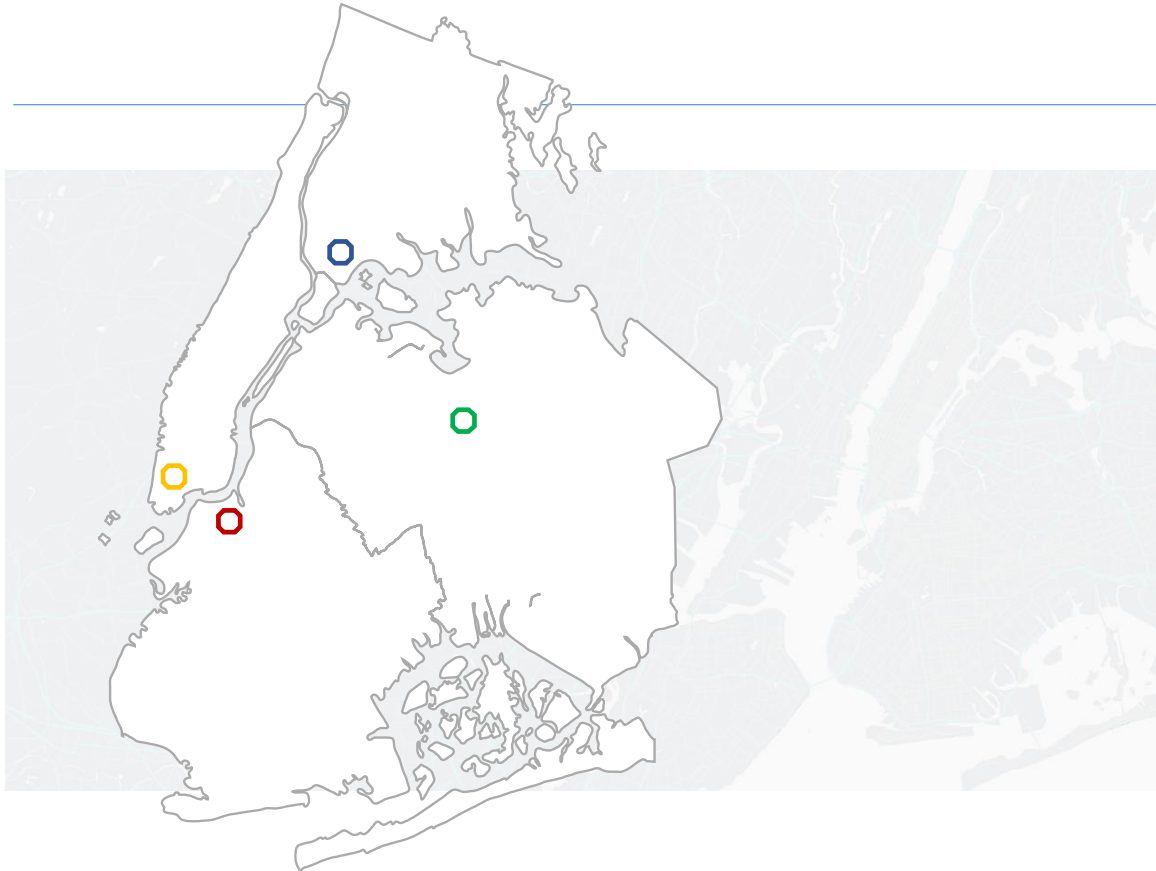


# AGENDA



1. Introductions and Welcome
2. Background and Vision
3. Design-Build Delivery
4. Our Commitment to Project Excellence
5. Master Schedule
6. Q&A

# 1. INTRODUCTIONS AND WELCOME



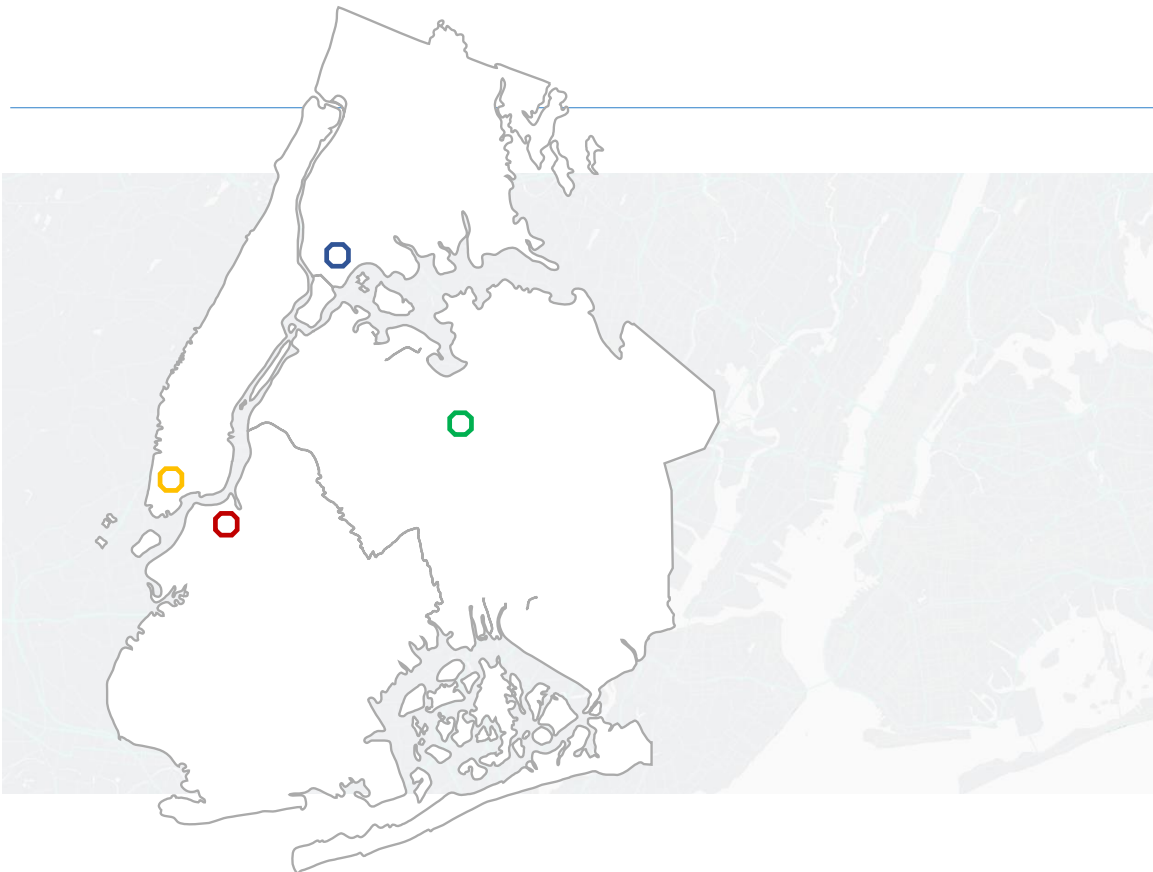
Magalie Austin  
Chief Diversity and Industry Relations Officer

Jamie Torres-Springer  
First Deputy Commissioner

David Varoli  
Deputy Commissioner / General Counsel

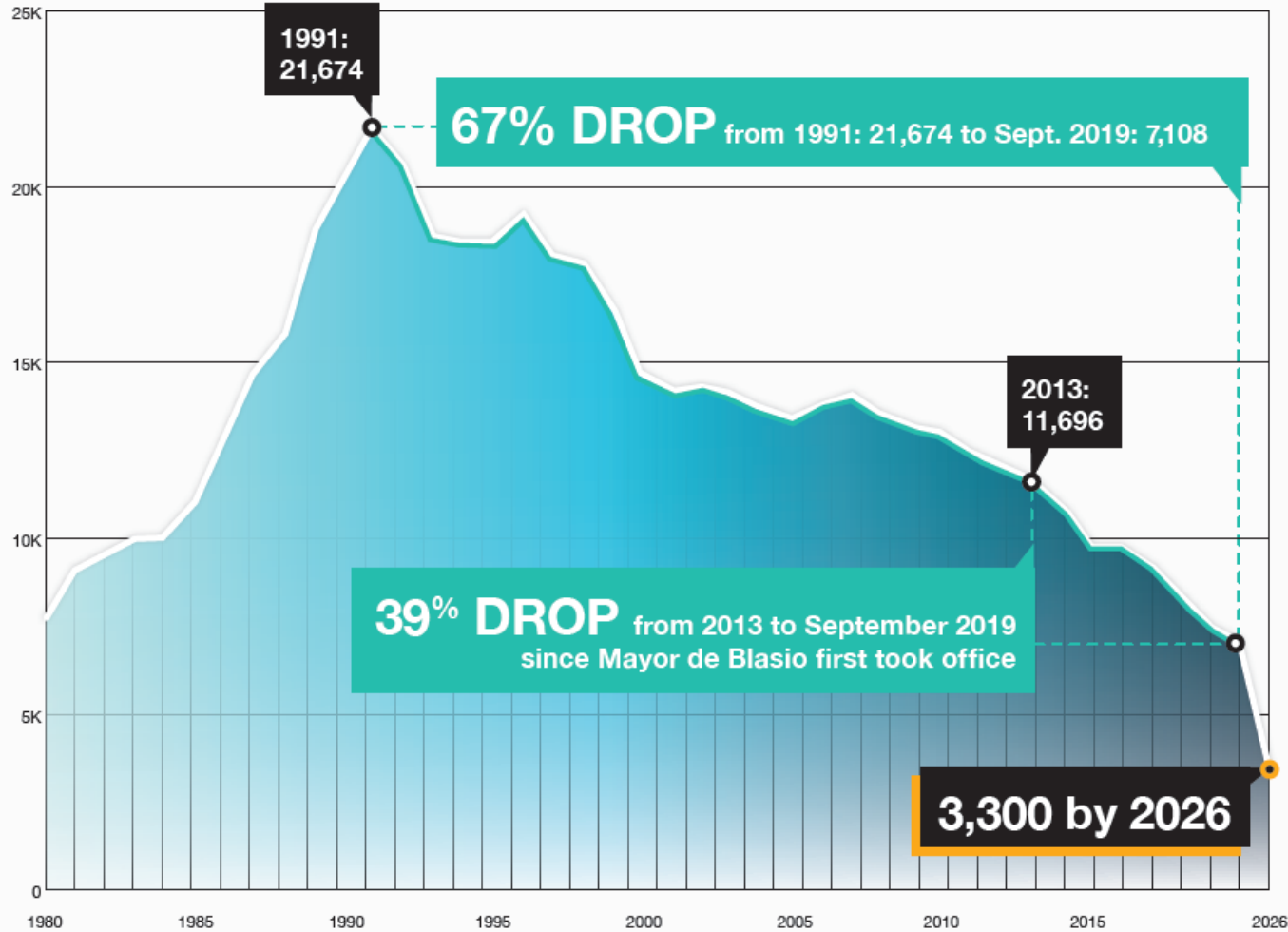
Thomas Foley  
Deputy Commissioner for Public Buildings

# 2. BACKGROUND AND VISION



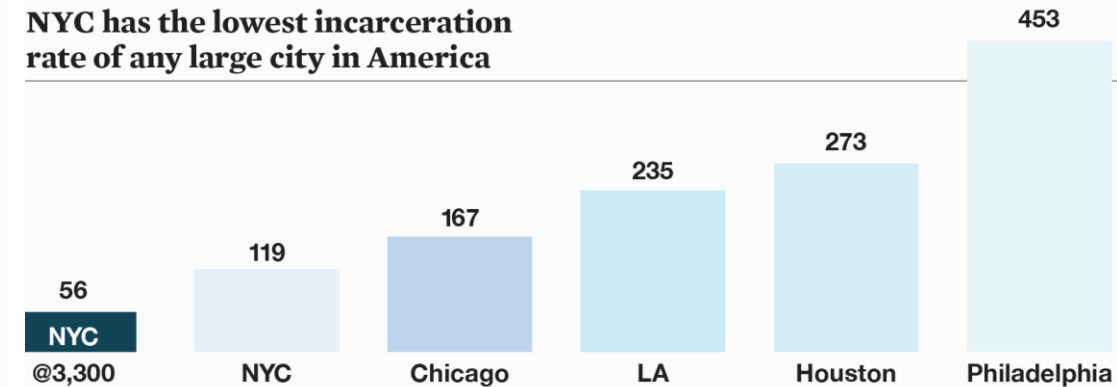
# NYC's Historic Decarceration Plan

NEW YORK CITY'S JAIL POPULATION From ~22,000 (1991) to ~7,000 (2019)



- The jail population has fallen 67% since 1991 as **crime has continued to decline**
- **Jail admissions are down 50% since 2013**
- New York City has the **lowest rate of incarceration** of all large US cities
- At 3,300, New York City will have the **lowest jail population since 1920**

NYC has the lowest incarceration rate of any large city in America



# Why We Are Closing Rikers

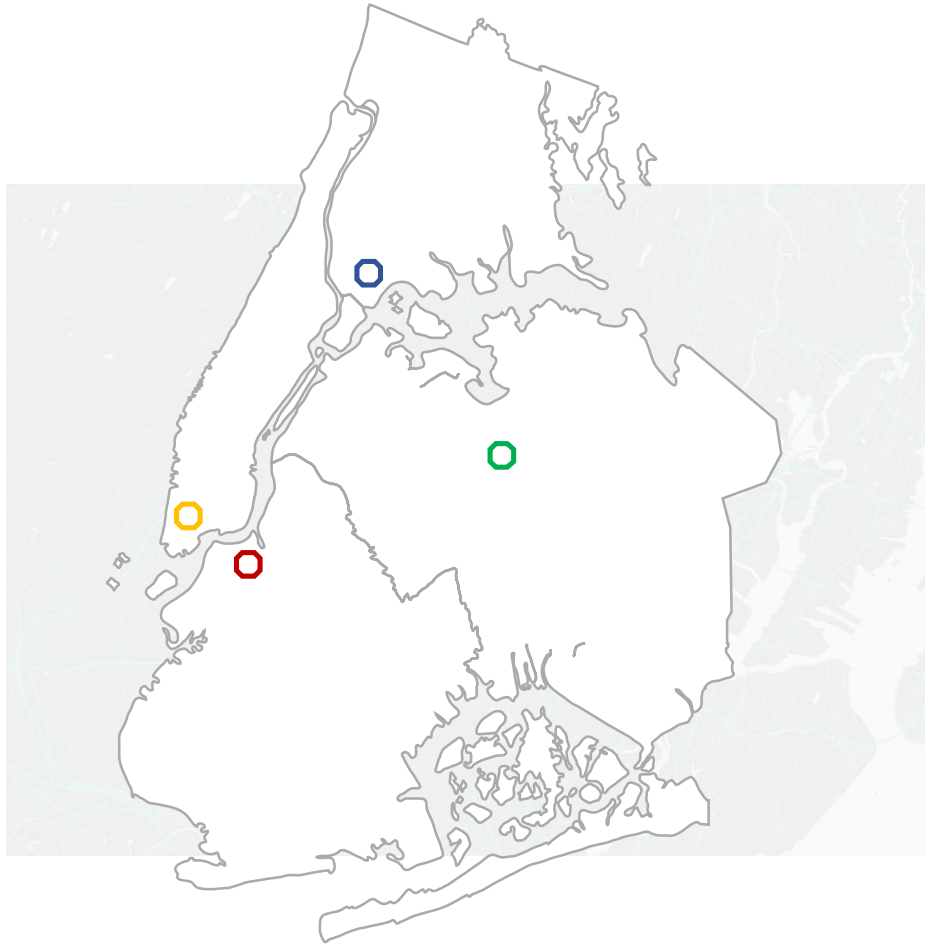
## The Moral Imperative

- Recidivism and violence reduction efforts limited by Rikers' design and location
- Facilities not up to modern standards – design and philosophy from another era
- Visiting loved ones difficult – even prohibitive
- Rikers' location can lead to delays in resolving cases, potentially resulting in longer stays in jail

## Goals for the Borough Based Facilities

- Humane facilities designed to improve health, educational, and social outcomes
- Provide greater access to communities, social services, attorneys, courts and providers
- Create normative environments with improved lines of sight to increase safety
- Reduce violence with new procedures, smaller units and increased quality programming

# The Borough-Based Jails Vision



New York City is at a transformational moment, rethinking and redoing the way in which its justice system operates to ensure it is as small, safe and fair as possible. The City is **seeking to create buildings that are equal in ambition to the transformational changes that have taken place and continue to unfold** in the City's criminal justice system.

These facilities must be a beacon of **high quality civic architecture, supportive of immediate neighborhood context and of all New Yorkers.**

# Program Summary

Close jails on Rikers Island & The Barge replace with a **smaller, safer, fairer** system that will have:

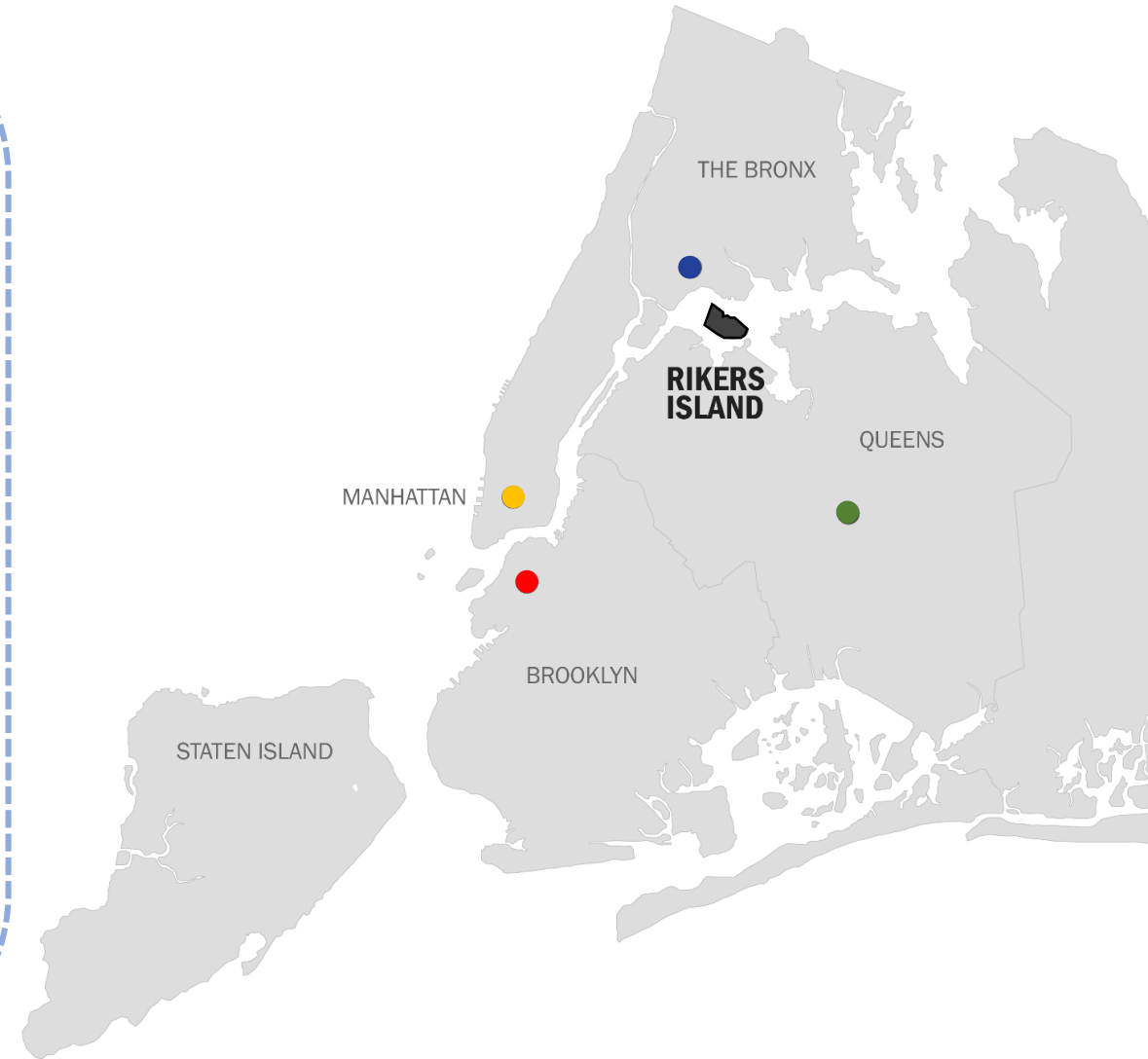
> Housing for a total of 3,300 people  
(requires 3,545 beds)

Current jail capacity in NYC: 11,300 beds  
(*Pre-GMDC closure: ~ 13,100 beds*)

> Four borough-based sites (Manhattan, Brooklyn, Queens, and The Bronx)

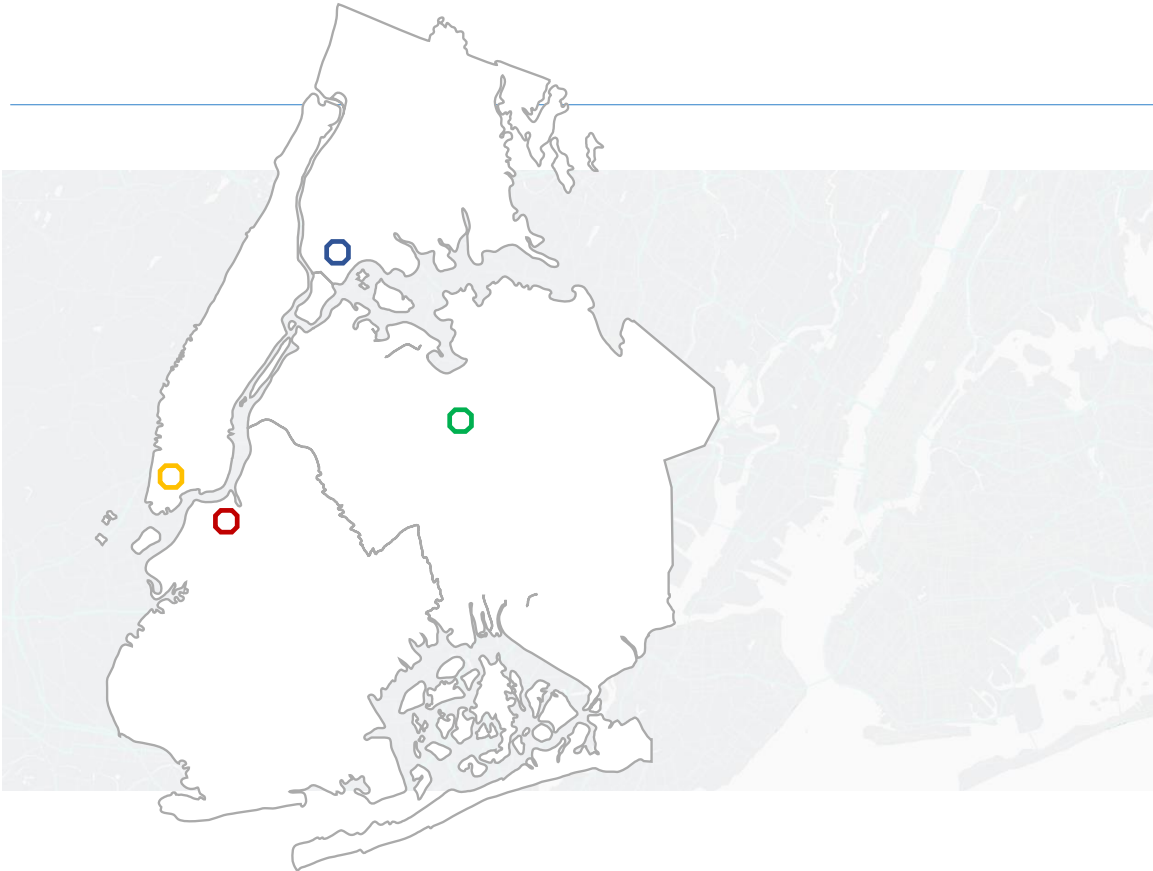
Currently NYC has 11 active jails (*8 facilities on Rikers Island; 3 borough facilities*)

> Continue focus on re-entry and culture change





### 3. DESIGN-BUILD PROCUREMENT AND DELIVERY

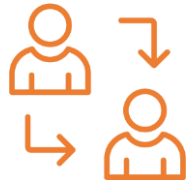


# Design-Build Essentials

Strategies to reduce project delays, create efficiencies, and promote innovation.



Having **contractors involved** during the design process



**Transferring risk** to the party most able to manage it



Taking advantage of **best practices** from across the country and beyond in building more humane criminal justice facilities

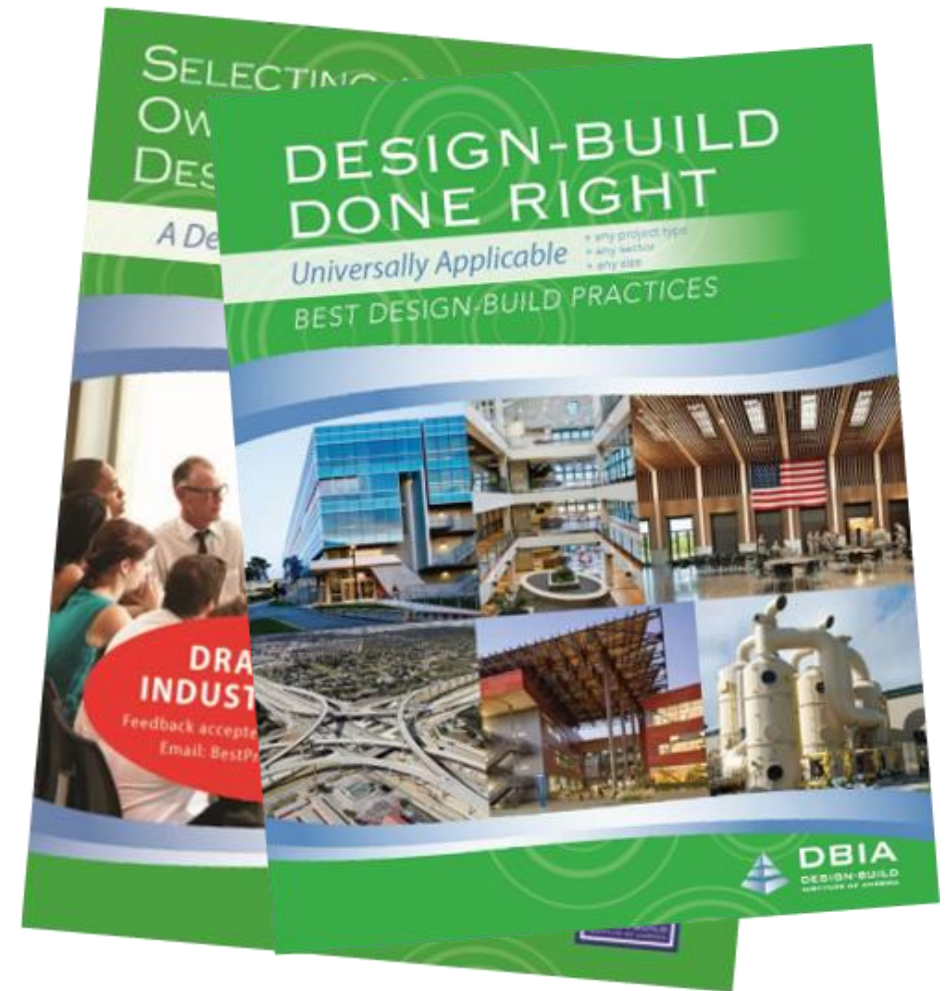
2018 New York State Budget  
Authorizes **Design-Build** for the Borough-Based Jails with a **single integrated team** to design and build a project.

Already in use across the country, **including in NYS and in NYC** for State-led projects.

# Design-Build is Different

Requires a different mindset

How will the City support the D-B team in bringing their best ideas?



# Design-Build Win-Win-Win

As part of DDC's shift to collaborative design-build approach, DDC will implement the Design-Build Institute of America's best practices

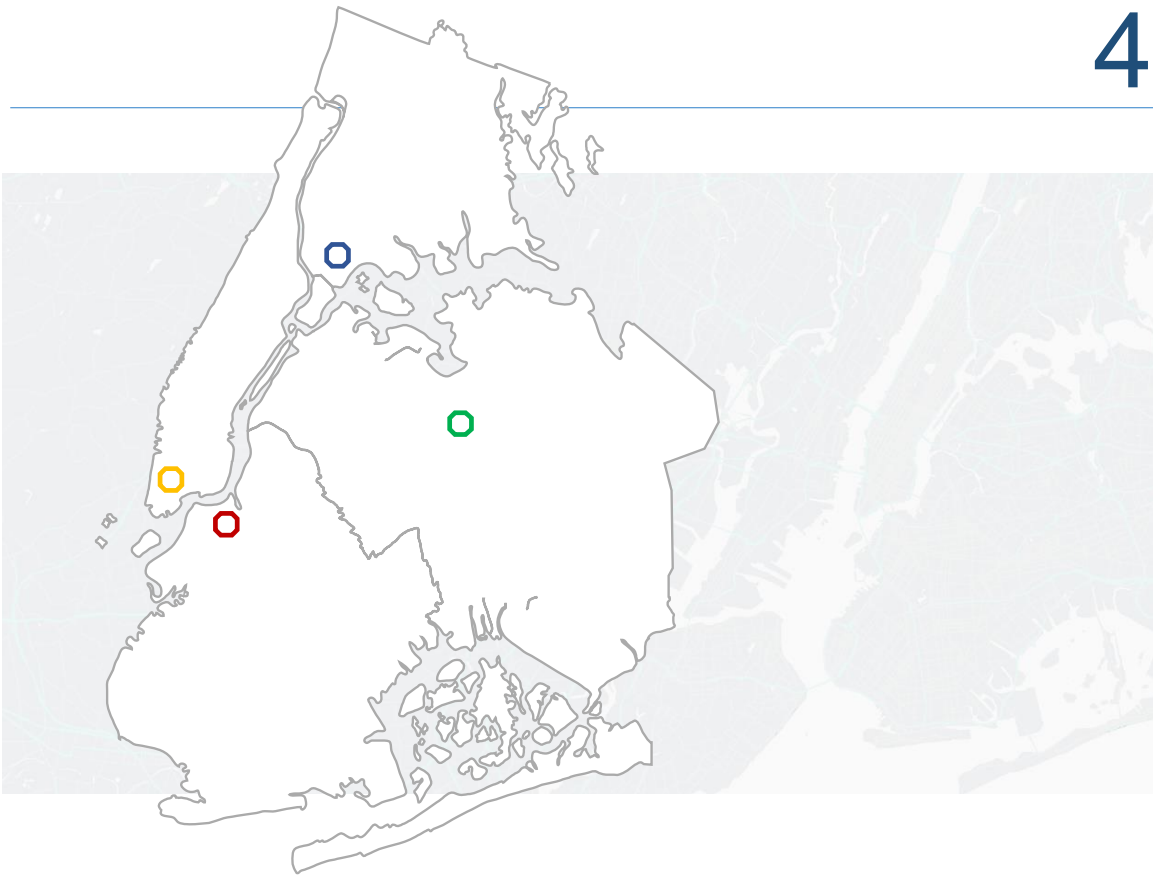
## Procurement

- Two-phase, **best-value** selection
- **Stipends** for unsuccessful responsive and responsible RFP proposers
- Formal alternative dispute resolution partnering program
- Integrated City-design-build team approach
- Subject to City design review

## Mitigating DB risk

- **Allowances**
- Potential economic price adjustment provisions
- Mitigating unknown conditions

# 4. OUR COMMITMENT TO PROJECT EXCELLENCE



# DDC Project Excellence

## Mission and Values

---

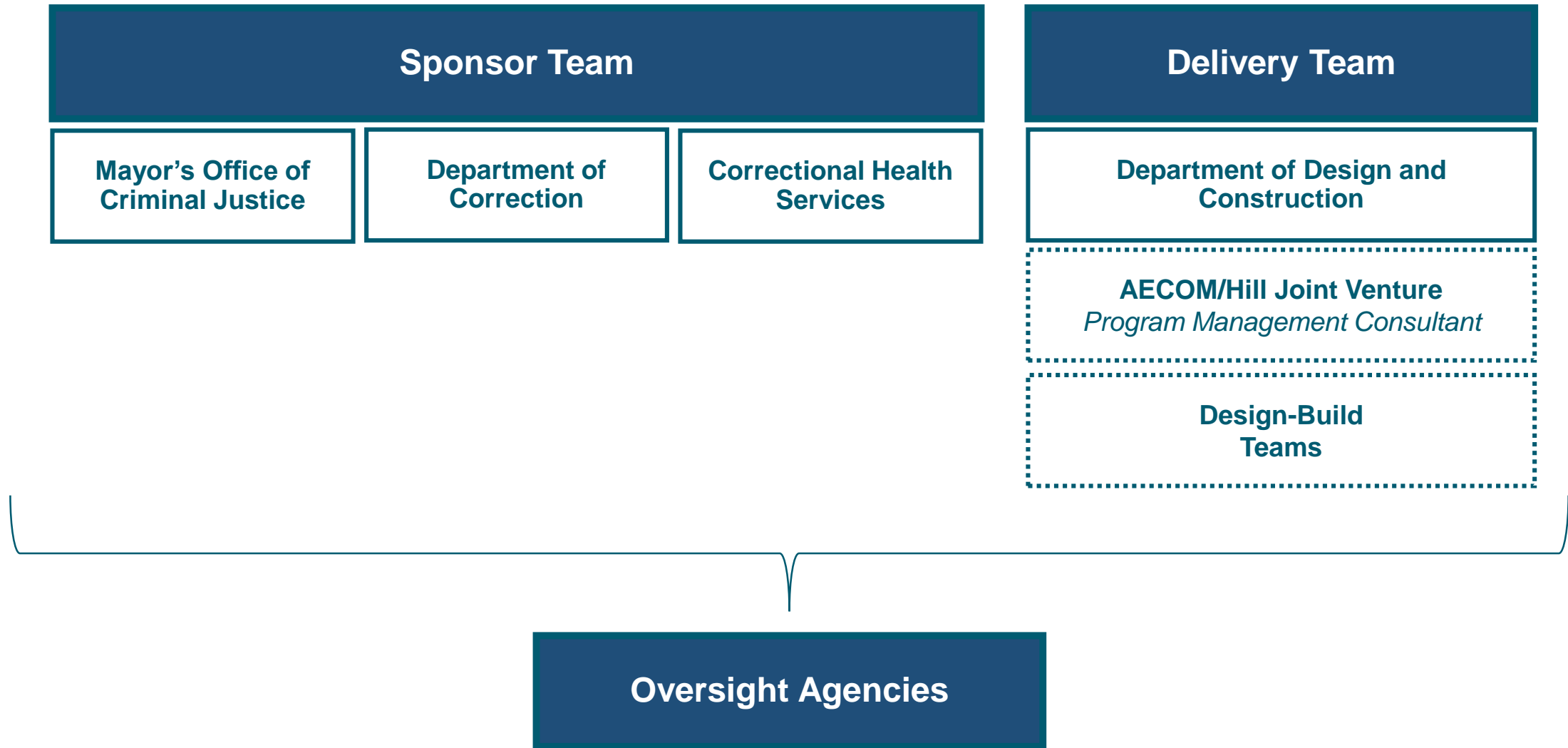
Through Design and Construction Excellence, DDC is committed to delivering capital projects that are:

- Enduring
- Practical
- Constructible
- Economical
- Inspiring

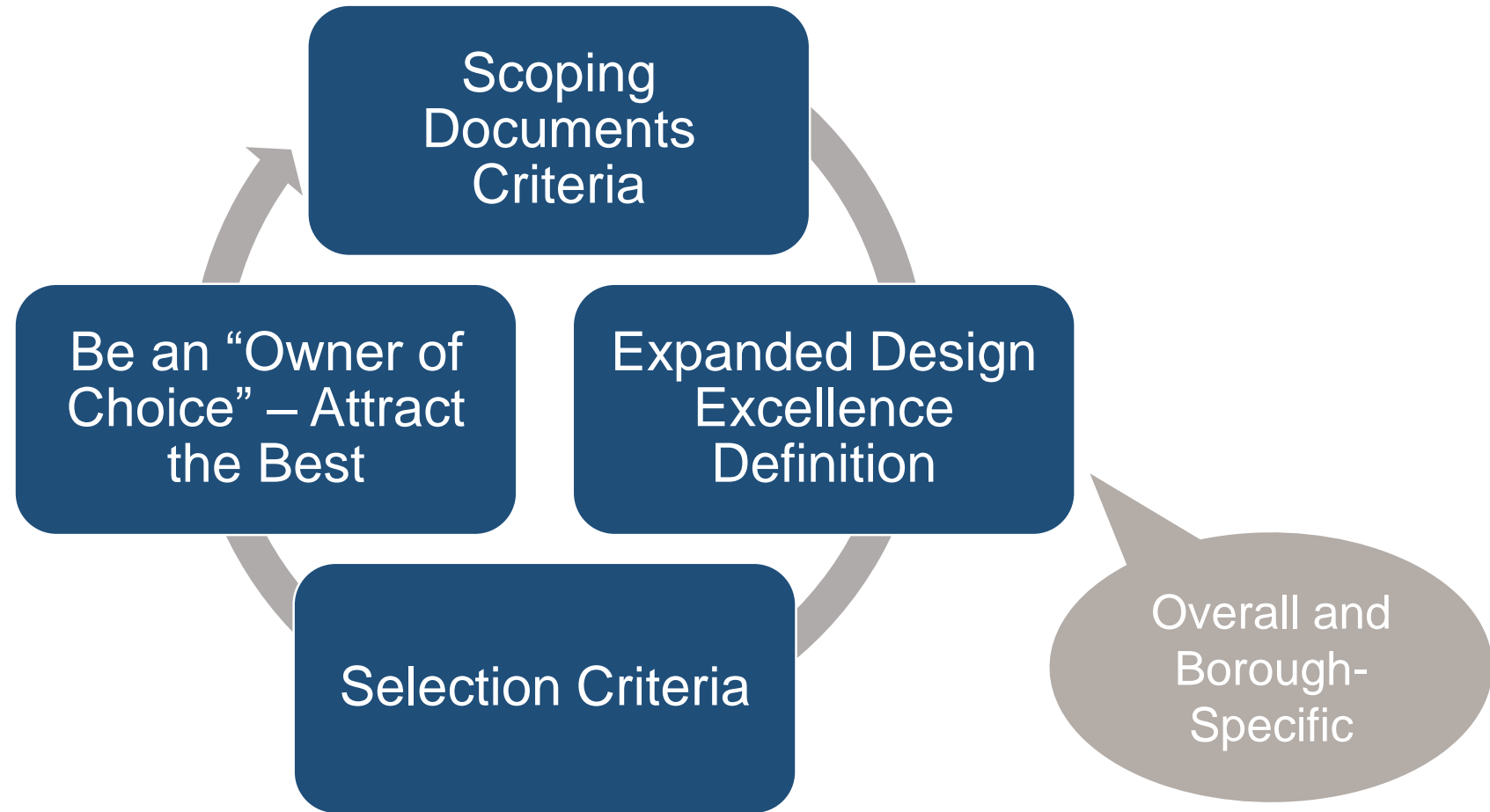


## A STRATEGIC BLUEPRINT FOR CONSTRUCTION EXCELLENCE

# Borough-Based Jails Program Management



# Design-Build Project Excellence Strategies

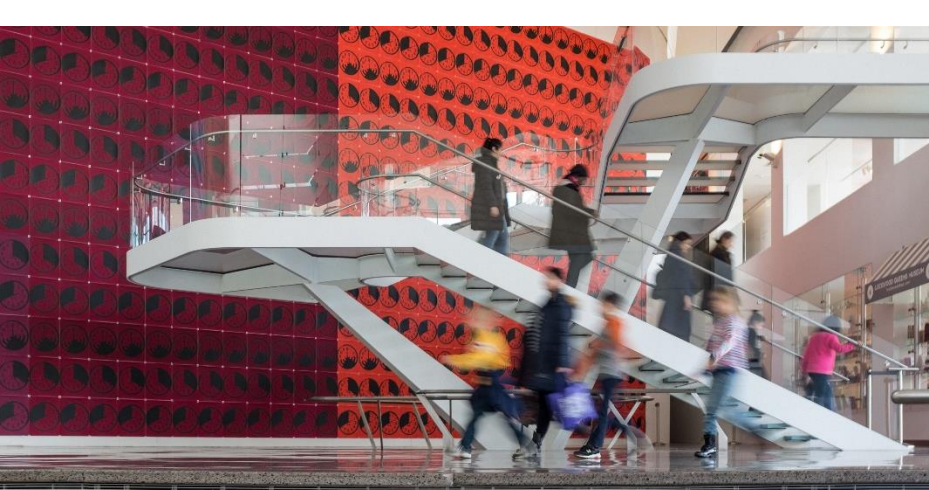




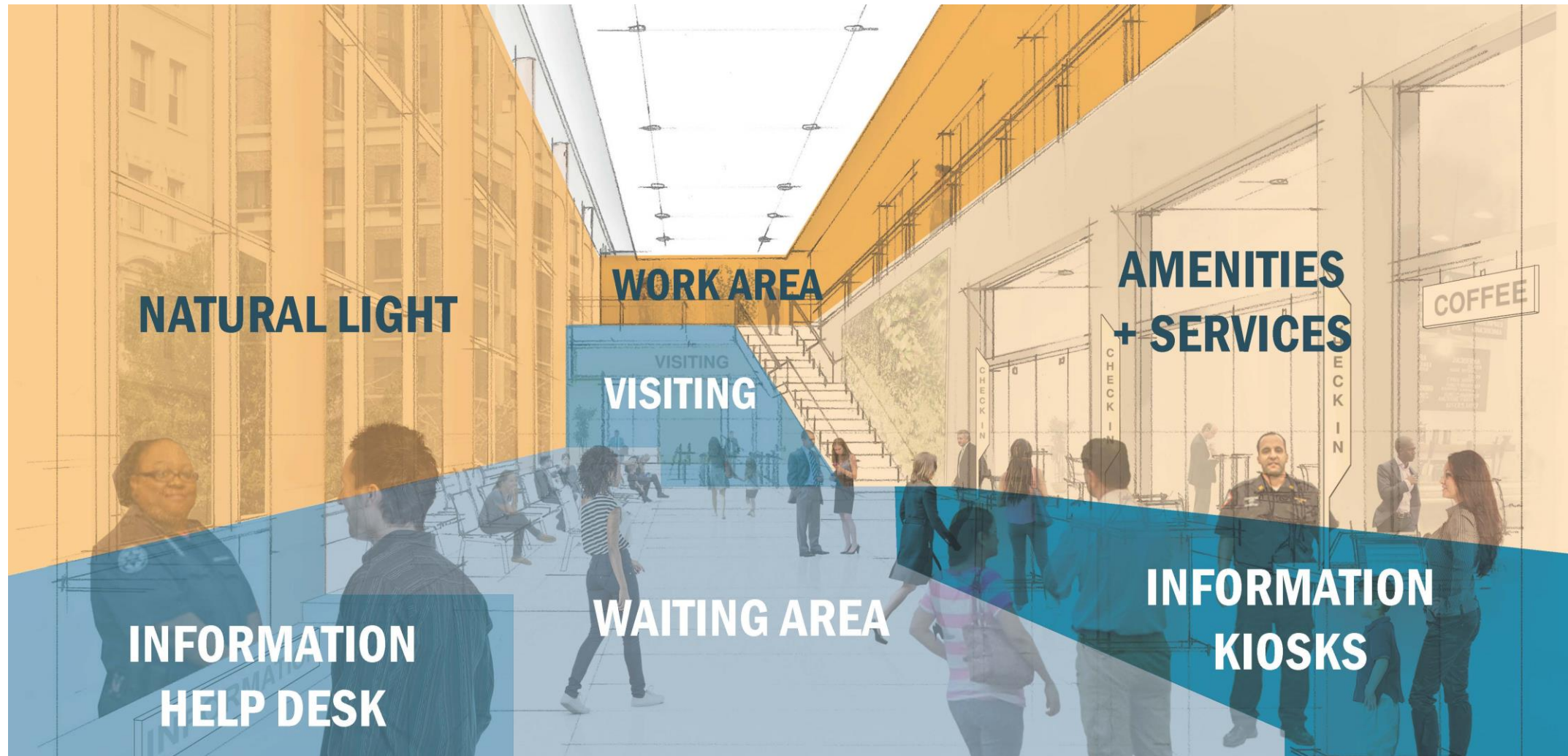
# Our Project Excellence Experience



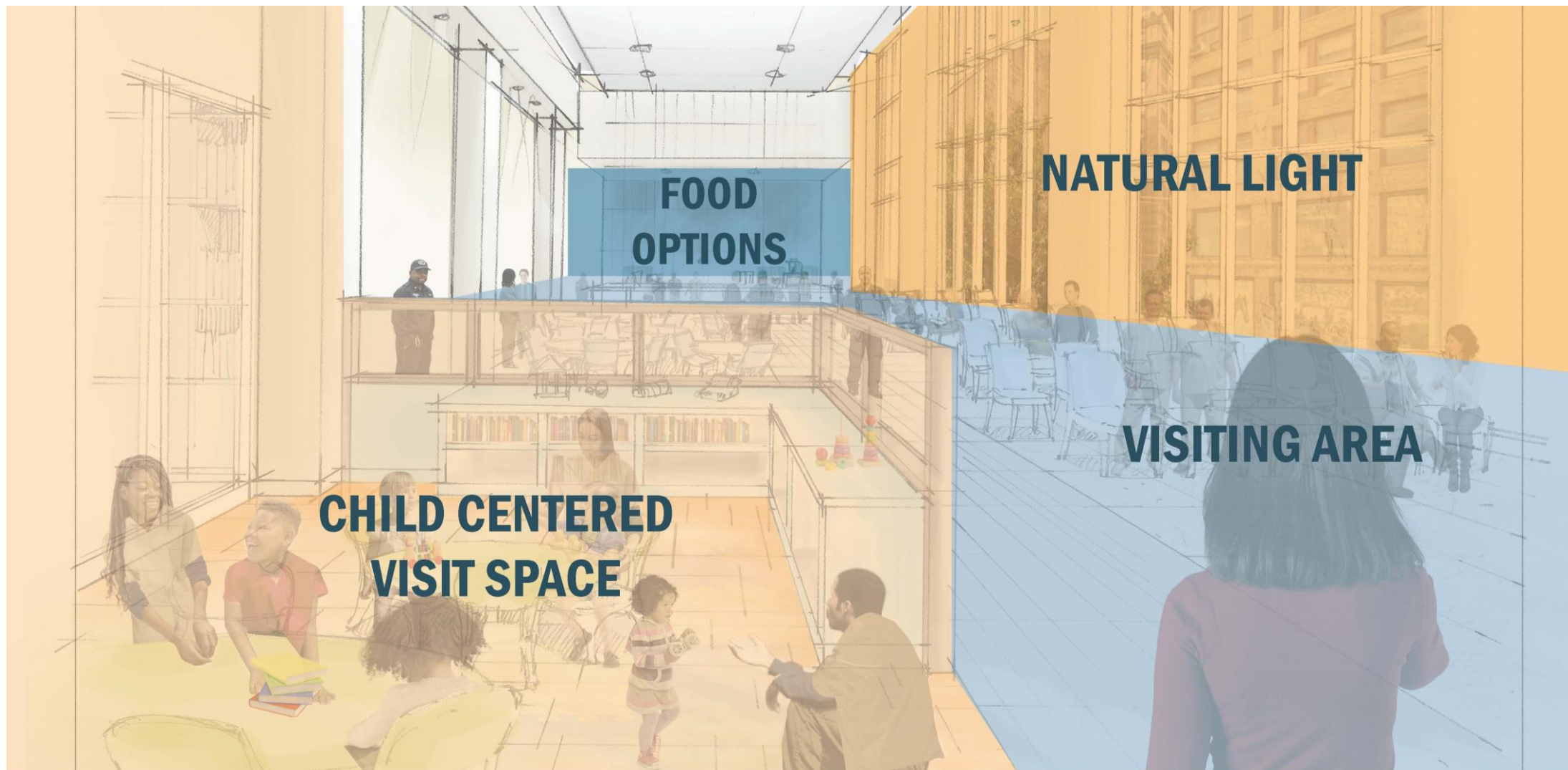
# Our Project Excellence Experience



# BBJ Vision: Welcoming Lobby



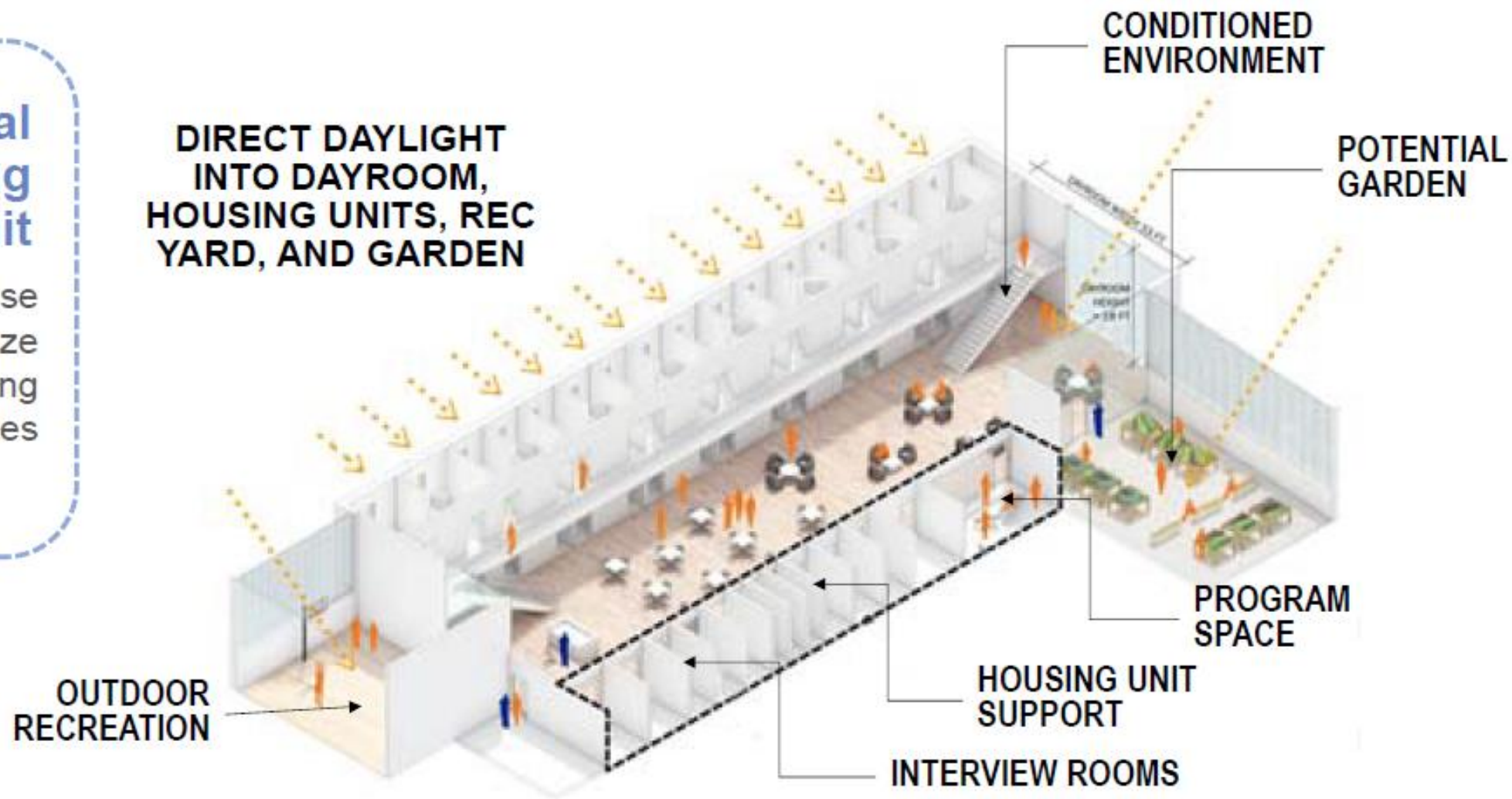
# BBJ Vision: Comfortable Visiting Spaces



# BBJ Vision: Improving the Inside Experience

## Typical Housing Unit

Smaller units increase safety and maximize tailored programming opportunities

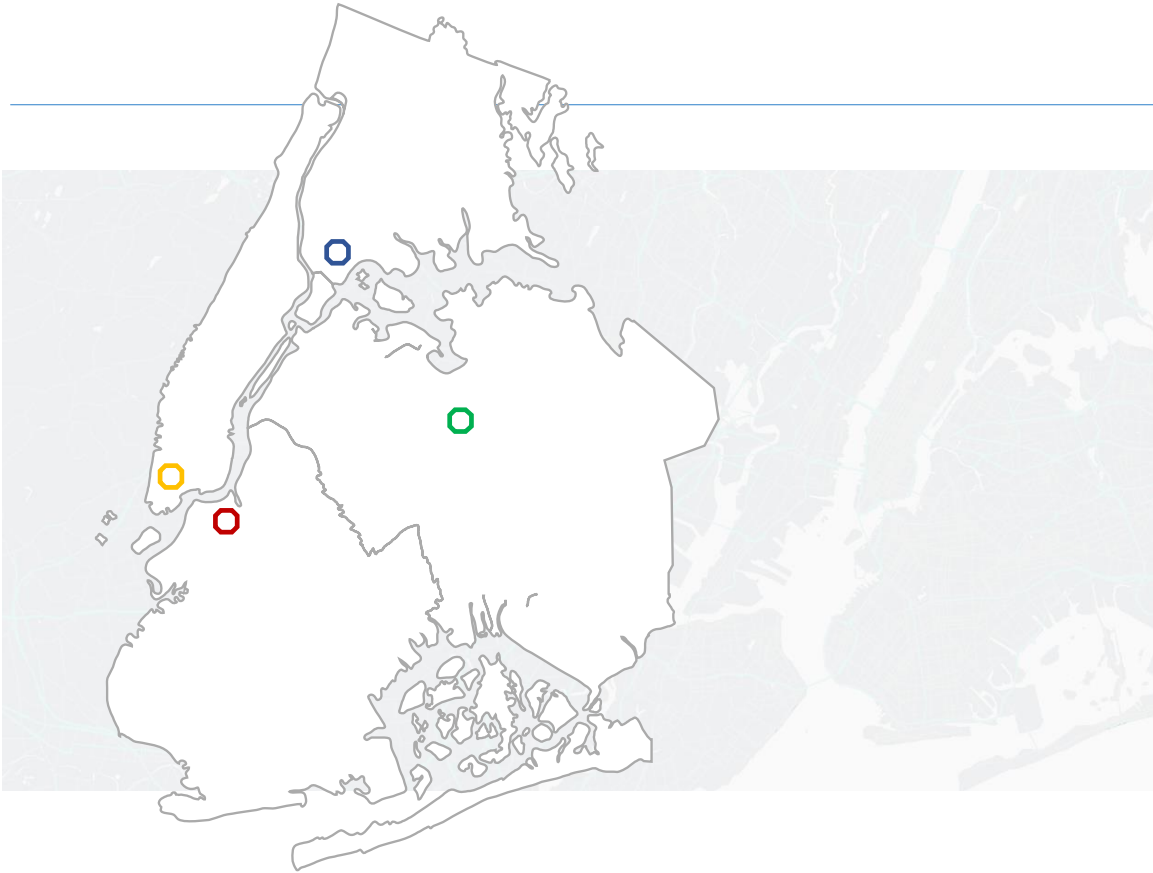


# Learning from Across the U.S. and Europe



# 5. SCHEDULE

---



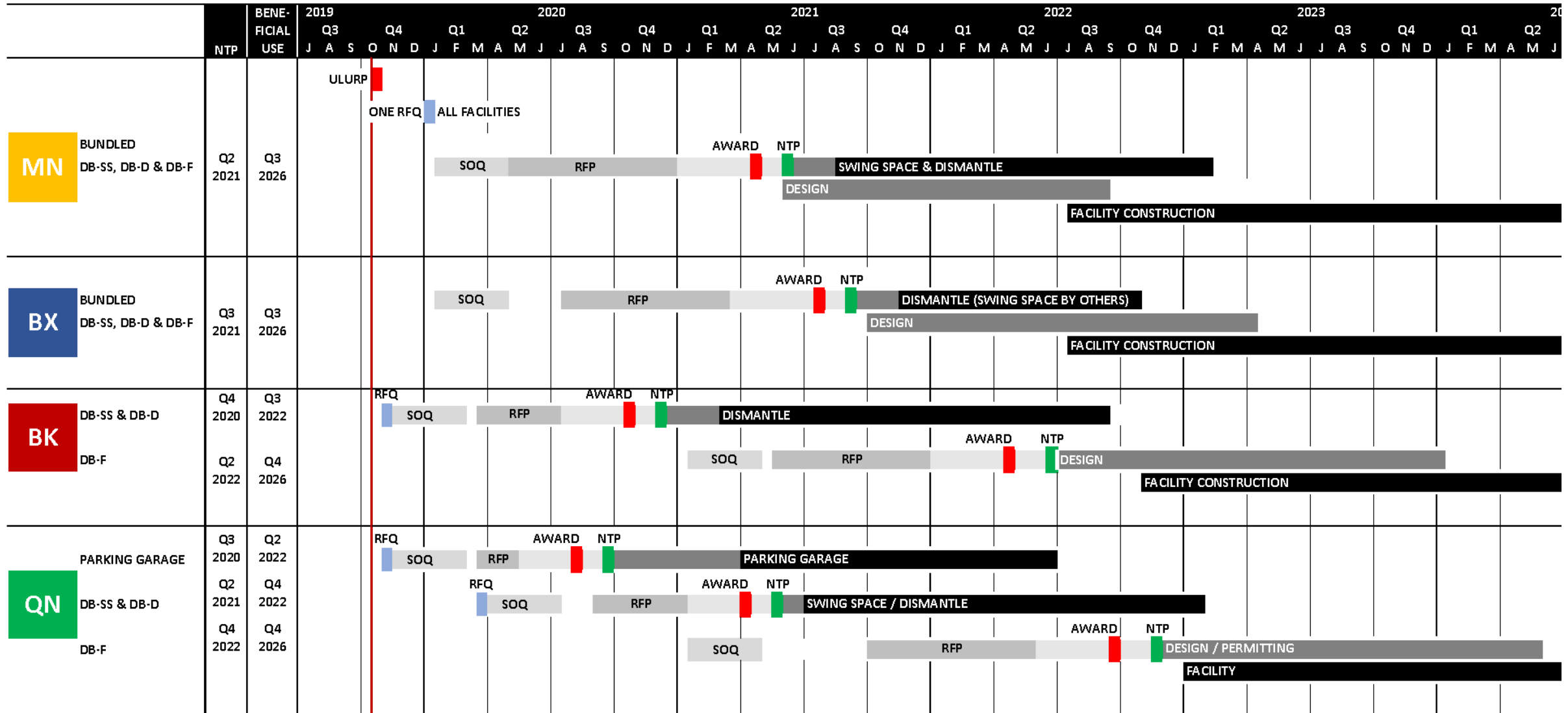
# 7 Opportunities

	RFQ Site and Scope Summary	Anticipated RFQ Release Date	Anticipated SOQ Due Date	Anticipated RFP Release Date
Early Works	Queens Garage	November 2019	First Quarter 2020	First Quarter 2020
	Brooklyn Dismantle/Swing Space	November 2019	First Quarter 2020	First Quarter 2020
	Queens Dismantle/Swing Space	March 2020	Third Quarter 2020	Third Quarter 2020
New Facilities (1 RFQ for all)	Manhattan Demo/Swing/Facility	First Quarter 2020	Second Quarter 2020	Second Quarter 2020
	Bronx Demo/Swing Space/Facility			Third Quarter 2020
	Brooklyn Facility		Second Quarter 2021	Second Quarter 2021
	Queens Facility			Fourth Quarter 2021

Final RFP schedule may be advanced pending overall market response.



# 7 Opportunities



Final RFP schedule may be advanced pending overall market response.

## 6. Q&A

---

Join Us!

